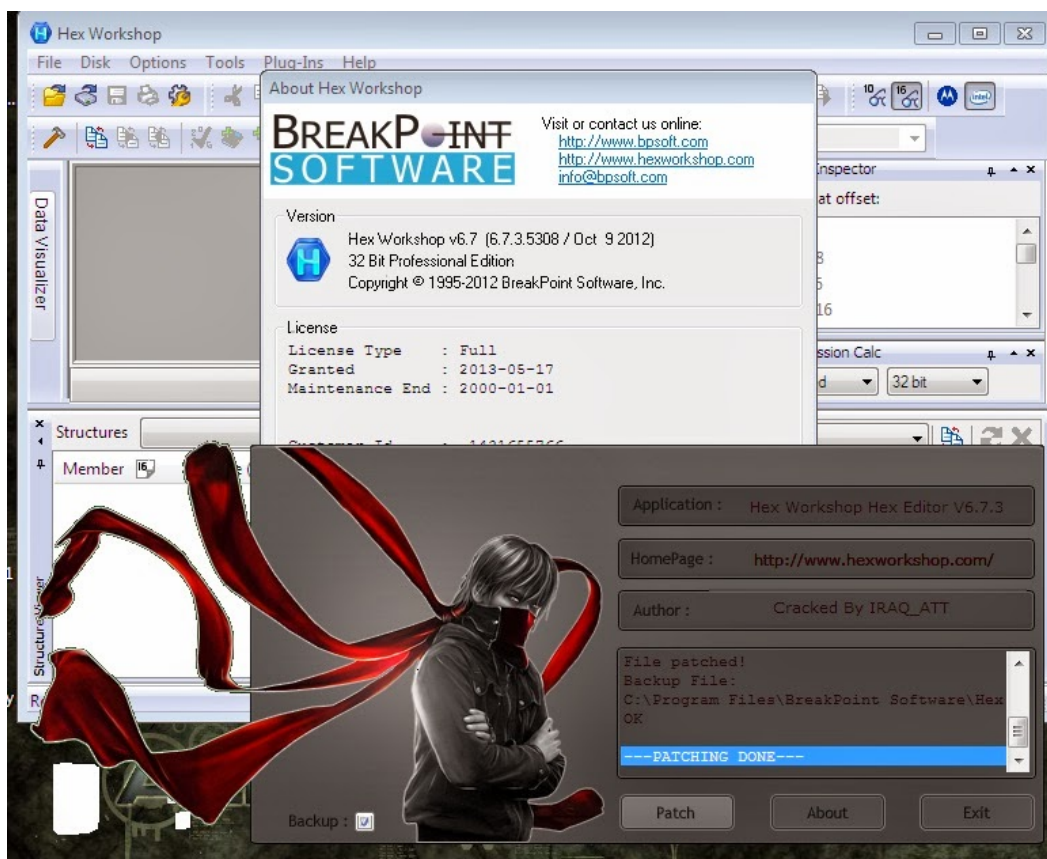


Hex Workshop 4.23 Serial 64 Bit

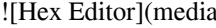


DOWNLOAD: <https://byltly.com/2iqdy8>



0-WEB.RU

Although the first release was released in 1998, the hex editor came to prominence after its inclusion in many distributions of the Linux operating system. It is among the most popular hex editors available. Hex editors typically consist of a hexadecimal buffer in which user-entered hexadecimal data are displayed, in addition to a textual buffer where the user enters text. For example, in the `\x7e` symbol used in the snippet below, the symbol in the hex editor is displayed in the hexadecimal buffer as `"7E"` and the text buffer contains the text `"\x7e"`. The user can edit any data, view the data, exit the editor, or load another file.

 It is important to note that in Microsoft Windows the file format may be different. Hex editors typically use a format based on the ASCII file format (also referred to as text or textual hexadecimal format).

Recommended Knowledge and Skills {#recommended-knowledge-and-skills.section} * [Microsoft Windows](microsoft-windows.md) * [Command Line](command-line.md) * [React Developer tools](react-dev-tools.md) * [How to create and maintain a React project](react-tutorials-create-and-maintain-react-project.md) * [How to use the CLI](command-line-cli.md) * [How to use linter](linting.md) ## How to Use the Hex Workshop Editor {#how-to-use-the-hex-workshop-editor.section} To start, start the `\hexworkshop` console. You can find it in the `\(Program Files)\Hex Workshop` folder. 82157476af

[Solibri Model Checker V7 Crack 1](#)
[font fs albert pro download free](#)
[Spectre \(English\) telugu movie torrent](#)