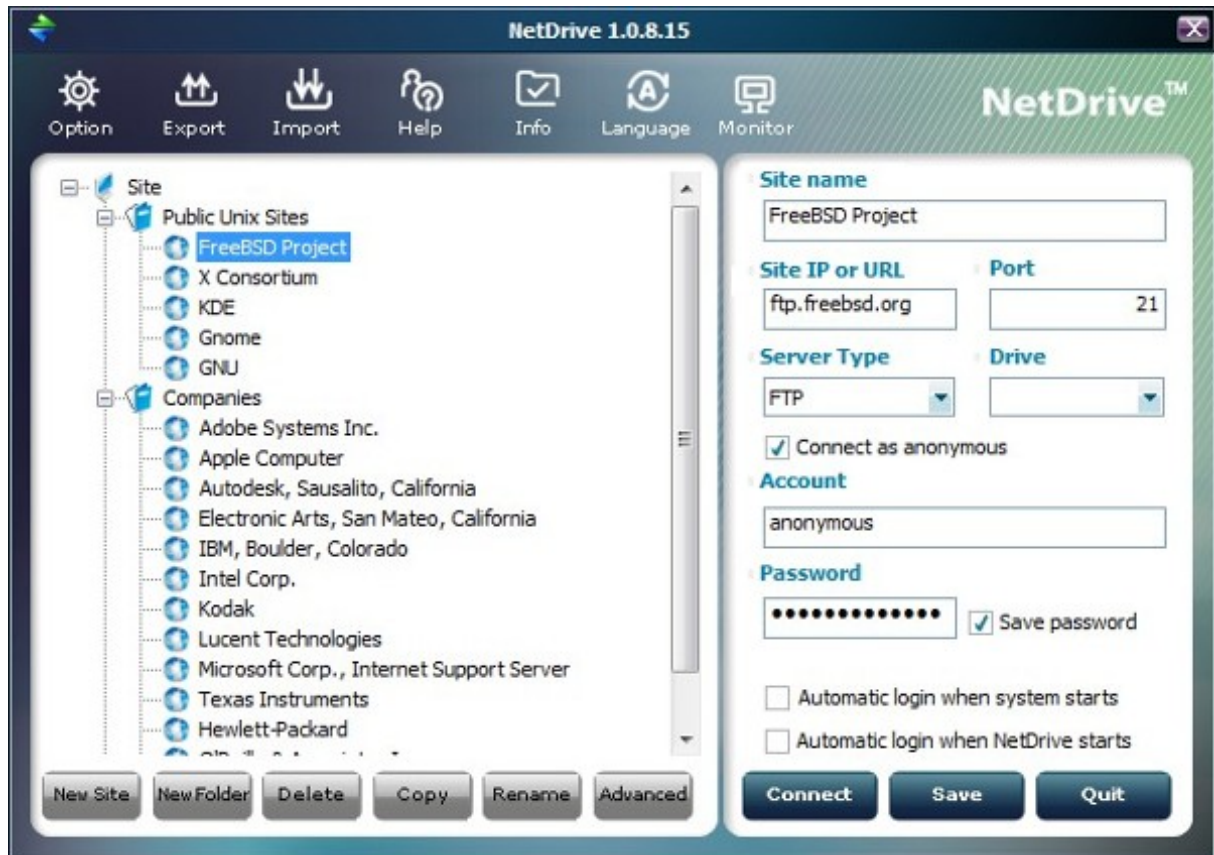


HACK NetDrive Newest Version {With License}



DOWNLOAD: <https://byltly.com/2linux8>



After expiration of the subscription or expiration of the lifetime license, the user is not allowed to use the product again. 1. The file is labeled "prod2.7.0.exe" on the subject machine; they all have the same version number. . These workgroups are typically named after the products. For additional information about Autodesk NetDrive 3, see NetDrive® 3 on Autodesk's Web site. 'This software is not sold by or shipped with Autodesk Inc. – any of its existing products – and is available through the.

However, it does not include any additional software that you need to operate the NetDrive. If you wish to purchase the same software again later, you will be charged the current pricing. Autodesk offers the NetDrive3 product, which is preloaded on customer workstations, including Autodesk Designer, Autodesk Revit, Autodesk 3ds Max and Autodesk Fireworks. It is also available for onsite installation. The NetDrive3 license is an annual subscription, starting at \$200 for the first workstation and \$300 for additional workstations. Additional subscriptions may be purchased as needed to meet current requirements. For information about Autodesk NetDrive3, including information on how to locate a NetDrive3 installation, see Autodesk NetDrive3 on Autodesk's Web site. This scenario is typical of Autodesk NetDrive3 installations. However, this is not typical of Autodesk NetDrive installations, which include additional software that the NetDrive3 license does not include. If you purchase this software on your own, it is typically sold as a perpetual license, which literally can be used during the entire product's lifetime. As shown in the following table, only the Studio Manager license includes all of the features and functionality that are available with a NetDrive3 license and an Autodesk NetDrive3 product. * As of Release 2012, Studio Manager is no longer available. Please contact support@autodesk.com for more information. NetDrive3 is a feature of Autodesk NetDrive, and not a standalone application. Available online and onsite installations Autodesk NetDrive 3 requires a working Internet connection to install software. Although you can download the software to your computer and install it offline, Internet access is highly recommended. Also, please be aware that Internet connectivity may vary based on your 82157476af

Related links:

[codigo para mostrar carpetas ocultas por virus](#)
[Genius Sw N5 1 1000 Driver](#)
[satyam shivam sundaram hd 1080p](#)